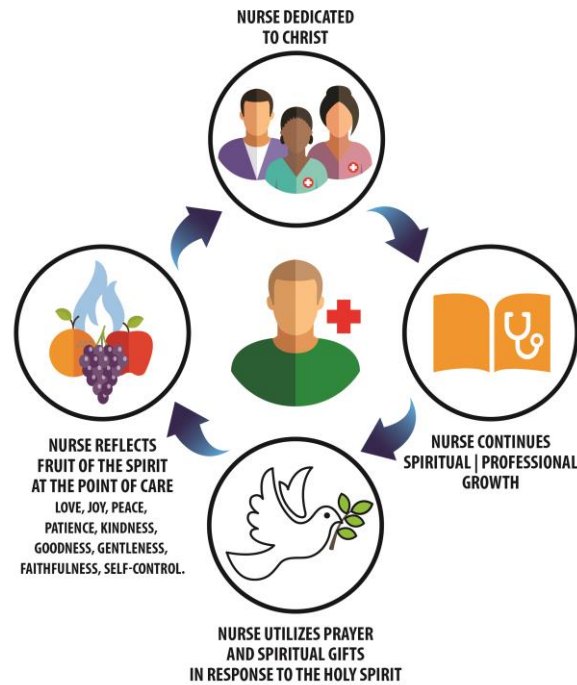


The Agape Nursing Model

A Nursing Model Based on Christ



**PATIENT RECEIVES
CHRIST-CENTERED CARE**

THE AGAPE NURSING MODEL ADDRESSES THE CHARACTER OF THE NURSE WHICH ULTIMATELY PROVIDES FOR CHRIST-CENTERED PATIENT CARE.

<https://www.agapenursingmodel.com>

THE AGAPE NURSING MODEL OFFERS CHRIST-CENTERED CARE
BASED ON THE QUALITIES OF A KINGDOM NURSE

- FOCUSED, DYNAMIC CARE INSPIRED BY THE QUALITIES OF CHRIST
- GUIDES THE CHARACTER OF THE DEDICATED CHRISTIAN NURSE
- COMBINES BEST NURSING PRACTICES WITH CONTINUED SPIRITUAL GROWTH
- ENABLES THE HOLY SPIRIT TO GUIDE THROUGH PRAYER, PROMPTINGS AND USE OF SPIRITUAL GIFTS
- GOAL IS TO OFFER CHRIST-CENTERED, COMPASSIONATE CARE.

*“Above all else, love each other deeply”
1 Peter 4:8*



AS CALLED AND COMMITTED FOLLOWERS OF CHRIST, WE ARE KINGDOM NURSES. WE DEVOTE OUR REFLECTION OF CHRIST-LIKE COMPASSION AS AN OFFERING OF THANKFULNESS AND GRATITUDE. AS AN AMBASSADOR OF CHRIST, WE STRIVE FOR EXCELLENCE. WE OFFER “AGAPE” NURSING, MODELED BY CHRIST, AS SELF-SACRIFICING LOVE IN ACTION. “LOVE OTHERS AS I HAVE LOVED YOU,” JOHN 13:34



THE KINGDOM NURSE IS COMMITTED TO EXCELLENCE IN HIS/HER PROFESSIONAL PRACTICE. OUR PARADIGM OF EXCELLENCE RESULTS FROM CONTINUING KNOWLEDGE OF EVIDENCED BASED PRACTICES. ADDITIONALLY, PURSUIT AND IMITATION OF THE CHARACTER OF CHRIST IS THE RESULT OF SPIRITUAL GROWTH. WE ARE TO “GROW IN GRACE AND KNOWLEDGE OF OUR LORD AND SAVIOR JESUS CHRIST,” 2 PETER 3:18



PRAYER, SPIRITUAL GIFTS AND THE INFLUENCE OF THE HOLY SPIRIT ARE PARAMOUNT TO THE SPIRIT OF THE AGAPE NURSING MODEL. THE KINGDOM NURSE SERVES AS A CONDUIT THAT LINKS THE HOLY SPIRIT TO THE PATIENT. OUR SPIRITUAL GIFTS FOCUS OUR INDIVIDUALIZED AREA OF SERVICE HAND-PICKED BY GOD. “IF WE LIVE BY THE SPIRIT, LET US ALSO WALK BY THE SPIRIT,” GAL. 5:25



THE CHARACTER OF CHRIST IS OUR EXAMPLE OF COMPASSIONATE CARE AND IS REFLECTED BY THE KINGDOM NURSE IN ALL ACTS, ATTITUDES, BEHAVIORS, THOUGHTS AND DEEDS. “BUT THE FRUIT OF THE SPIRIT IS LOVE, JOY, PEACE, PATIENCE, KINDNESS, GOODNESS, FAITHFULNESS, GENTLENESS AND SELF-CONTROL. AGAINST SUCH THERE IS NO LAW,” GAL 5:22



THE PATIENT ULTIMATELY RECEIVES CHRIST-CENTERED CARE. THE CALLING AND DEDICATION OF THE KINGDOM NURSE, THE COMMITMENT TO EXCELLENCE, PRAYER AND SPIRITUAL GIFTS ALLOWS THE PATIENT TO EXPERIENCE THE LOVE AND COMPASSION OF THE HOLY SPIRIT THROUGH THE FRUIT OF THE SPIRIT. “AS I HAVE LOVED YOU, SO YOU MUST LOVE ONE ANOTHER,” JOHN 13:34

NURSING METAPARADIGM – SO OTHERS KNOW HOW WE SERVE

HUMAN BEING: THE PATIENT, FAMILY, AND ALL THOSE WITHIN THE NURSE’S SPHERE OF INFLUENCE, BOTH PERSONALLY AND PROFESSIONALLY.

ENVIRONMENT: THE SPIRITUAL AND PHYSICAL LOCATION WHERE THE AGAPE LOVE OF JESUS CHRIST IS REFLECTED.

HEALTH: THE RELATIONSHIP BETWEEN THE SPIRITUAL, EMOTIONAL, RELATIONAL AND PHYSICAL WELL-BEING OF THOSE WHO RECEIVE THE AGAPE BASED CARE.

NURSING: PROVIDER OF CARE TO ALL HUMAN BEINGS REVEALING THE PRESENCE AND CHARACTER OF CHRIST THROUGH THE HOLY SPIRIT.

Fruit of the Spirit Manifested in the Kingdom Nurse*

LOVE	A CORE ELEMENT OF HEALTHCARE OATHS REQUIRES DOING NO HARM. THE AGAPE LOVE IS PROMPTED BY THE HOLY SPIRIT IN ANTICIPATION OF ACTIONS AND MOTIVES, KEEPING THE PATIENT FROM ACTUAL OR POTENTIAL HARM. THE HOLY SPIRIT INFLUENCES THE KINGDOM NURSE IN ALL MATTERS OF CARING. AS AN ACT OF WORSHIP, KINGDOM NURSES DISPLAY CARING THAT EXTENDS BEYOND REASONABLE, ACCEPTABLE NURSING CARE, ACTING AS WILLING VESSELS THAT ALLOW PATIENTS TO EXPERIENCE GOD’S AGAPE LOVE AND COMPASSION.	1 PETER 4:8 MATTHEW 7:12 ROMANS 13:10 1 COR. 13:4-5, 13 COLOSSIANS 3:14
JOY	UNLIKE HUMAN HAPPINESS, TRUE JOY COMES FROM CHRIST AND IS PRESENT REGARDLESS OF CIRCUMSTANCES. SUPERNATURAL JOY SERVES AS AN INSULATOR AND HELPS PROVIDE CONFIDENT SERVICE IN THE FACE OF UNDESIRABLE SITUATIONS. THE KINGDOM NURSE HAS CONFIDENCE THAT PRAYER PRODUCES DIVINE RESULTS AND JOY, AND GOD CONTROLS ALL CIRCUMSTANCES.	JOHN 16:24 ROMANS 12:15, 15:13 1 COR. 9:22
PEACE	INTERNAL CALMNESS RECEIVED FROM GOD THAT CAN BE PASSED TO AN ANXIOUS PATIENT AND REFLECTED AS CONFIDENCE IN THE OUTCOME REGARDLESS OF THE CIRCUMSTANCES. THERE ARE NO EARTHLY LIMITS ON GODLY PEACE. A PEACEFUL SPIRIT PROTECTS THE NURSE AS WELL AS THE PATIENT FROM A SENSE OF CHAOS. THIS PEACE REFLECTS SHALOM AND SECURES COMPOSURE, DISSOLVES FEAR, AND MAINTAINS HARMONY PERFECT PEACE COMES FROM GOD AND IS OFTEN COUPLED WITH JOY.	JOHN 14:27 ROMANS 15:13 PHILIPPIANS 4:4-8 2 THESS. 3:16
PATIENCE	CALM ACCEPTANCE OF PEOPLE OR CIRCUMSTANCES RESULTS IN RESPECT AND HIGH REGARD FOR OTHERS. COMBINED WITH PRAYER, PATIENCE ALLOWS THE KINGDOM NURSE’S ANXIETY TO BE REPLACED WITH FOCUS AND CONFIDENCE AND MAY HELP DIFFUSE PATIENT ANXIETY. THE KINGDOM NURSE WAITS ON GOD AND THE PROMPTING OF THE HOLY SPIRIT AND RESPONDS ACCORDINGLY. THE REWARD IS ENDURANCE, RENEWED STRENGTH AND DIVINE SUPPORT PROVIDING THE PATIENT WITH FRESHNESS IN THE DELIVERY OF CARE.	PSALM 75:2 EPHESIANS 4:31-32 PHILIPPIANS 4:6
KINDNESS	TREATING OTHERS AS GOD HAS TREATED YOU. THE KINGDOM NURSE APPROACHES THE PATIENT WITH KNOWLEDGEABLE, PROFESSIONAL CONFIDENCE, AND USES TENDERNESS IN WORDS AND ACTIONS. THE KINGDOM NURSE’S CHARACTER REFLECTS TENDERNESS GENERALIZED TO ALL PEOPLE.	PROVERBS 31:26 EPHESIANS 4:31-32
GOODNESS	GENEROSITY THAT SPRINGS FROM KINDNESS. THE ETHICAL PRINCIPLE OF BENEFICENCE ALLOWS FOCUS TO BE PLACED ON THE DESIRE TO HELP AND ADVOCATE. THE KINGDOM NURSE ELEVATES THIS VIRTUE TO A SPIRITUAL LEVEL BY DEMONSTRATING THE GOODNESS OF CHRIST TO OTHERS.	ROMANS 15:14 GALATIANS 6:10 1 TIMOTHY 6:18
GENTLENESS	SIMILAR TO MEEKNESS, GENTLENESS ALLOWS THE KINGDOM NURSE TO TEMPER AGGRESSIVENESS. IT REFERS TO THE SOFTNESS IN WORDS AND ACTIONS. THE KINGDOM NURSE INVITES THE HOLY SPIRIT’S OVERSIGHT IN STRIVING FOR GENTLENESS.	COLOSSIANS 3:14 1 PETER 3:15 JAMES 3:17
FAITHFULNESS	FAITHFULNESS IS THE FRAMEWORK REQUIRED FOR LOVE AND GRACE FLOWING FROM GOD TO THE PATIENT. THE KINGDOM NURSE REMAINS CONFIDENT AND FAITHFUL THAT THE HOLY SPIRIT WILL DIRECT STEPS, THOUGHTS AND ACTIONS. DAILY RENEWAL OF THE MIND AND HEART IS NURTURED THROUGH SCRIPTURE AND PRAYER, LEANING ON GOD FOR UNDERSTANDING. THE KINGDOM NURSE TRUSTS GOD IN ALL THINGS.	LUKE 16:10-13 ROMANS 12:2 2 COR 5:7 1 JOHN 1:3
SELF-CONTROL	PROVIDES THE DISCIPLINE NECESSARY TO BE ABOVE REPROACH IN CHARACTER, DILIGENTLY REMAINING ON TASK AND ALLOWING FOCUS ON THE WELL-BEING OF THE PATIENT.	1 COR. 9:24-27 2 TIMOTHY 1:7 TITUS 1:8

*Eckerd, N.A., (2018) A nursing practice model based on Christ, *Journal of Christian Nursing*, 35(2),124-130, doi:10.1097/CNJ.0000000000000417

MNEMONIC

A	ACCEPT CHRIST AS SAVIOR
G	GROW PROFESSIONALLY AND SPIRITUALLY
A	ANTICIPATE SUPERNATURAL INTERVENTION
P	PRAYER & SPIRITUAL GIFTS
E	EMBRACE FRUIT OF THE SPIRIT

*“...let your good deeds shine out for all to see, so that everyone will praise your heavenly Father.”
Matthew 5:16*

For more information, go to <https://www.agapenursingmodel.com>
Nancy Eckerd, MS, RN